

Figure GC 8.8.1

UWF Grid Connection Study Area for Bats

Map Number:  
Overview Map

Legend:

Subject Development:

UWF Grid Connection  
Construction Works Area

Study Area Extents:

150m Study Area  
- UWF Grid Connection  
Construction Works Area

50m Study Area  
- UWF Grid Connection  
Construction Works Area

Map Information:

Static Detector Locations and  
Identification Number

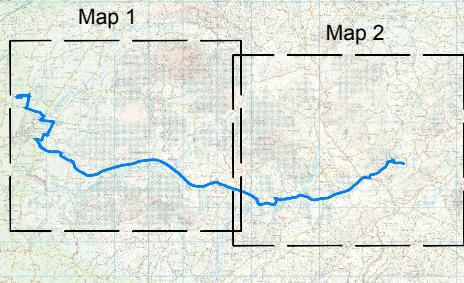
Material Haulage Routes Between  
the Concrete/Stone Suppliers and  
the Works Locations

Material Haulage Routes  
on the Local Road Network

L2166-0 Road Numbers



Keyplan:



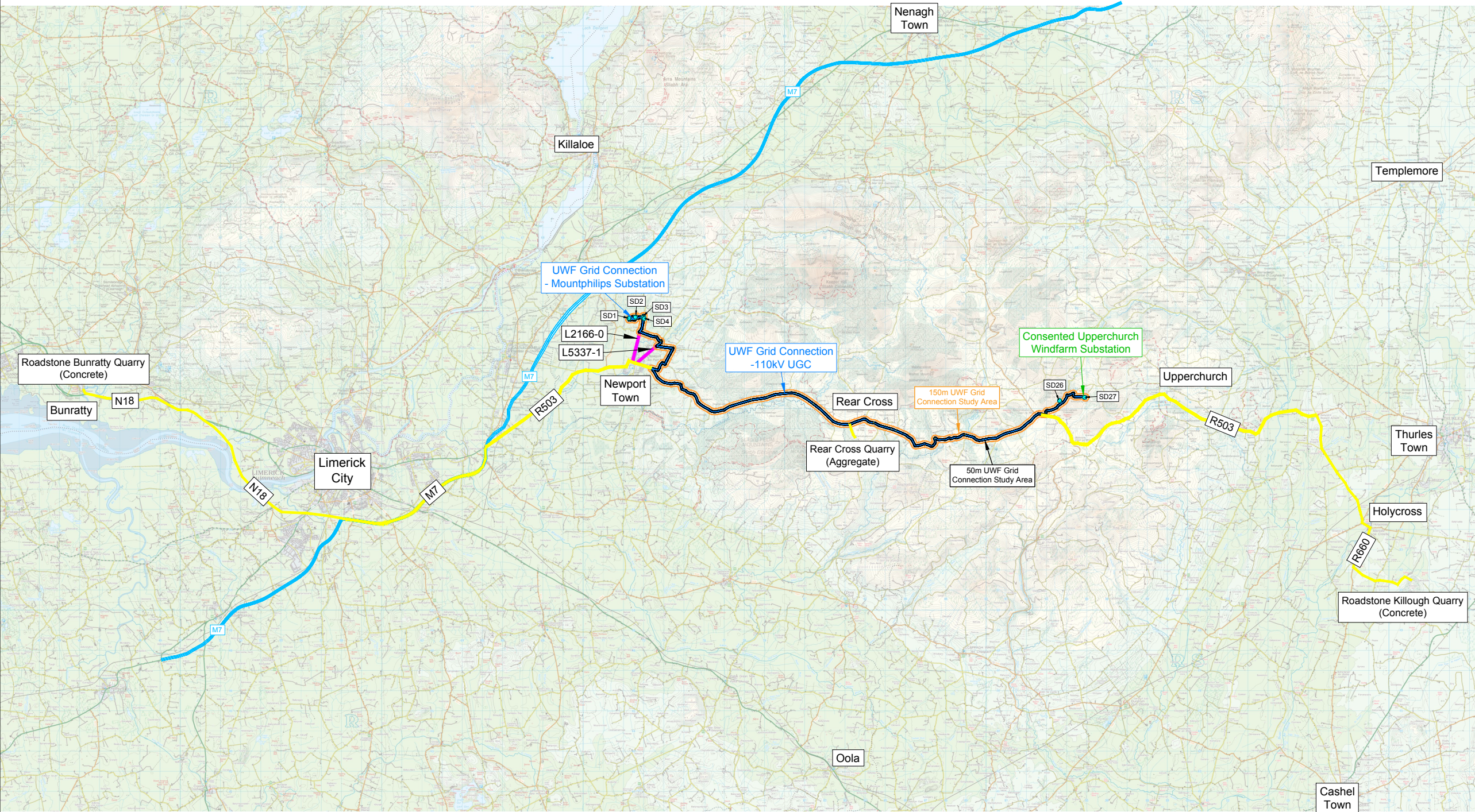
Project:  
UWF Grid Connection (2019)

Drawn by:	Checked by:	Date:	Sheet Size:
AB	PK	October 19	A3

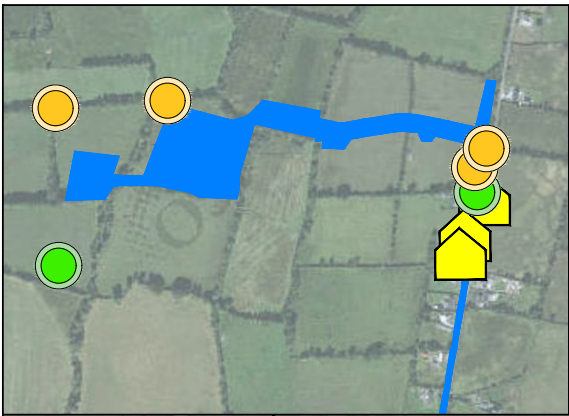


**ECOPOWER**

Aoife Butler  
Ecopower Developments Ltd  
Zetec House,  
Purcellsinn Business Park, Kilkenny  
TEL: +353 56 7750140  
MOB: +353 83 8805644







Biodiversity: Bats

### Figure GC 8.8.2

UWF Grid Connection  
Study Area for Bats

Map Number:  
Map 1 of 2

Legend:

#### Subject Development:

— UWF Grid Connection  
Construction Works Area

#### Study Area Extents:

— 150m Study Area  
- UWF Grid Connection  
Construction Works Area

— 50m Study Area  
- UWF Grid Connection  
Construction Works Area

#### Survey Results:

Bat Roost Suitability :

✕ Bridge/Culvert: Moderate  
✕ Bridge/Culvert: Low  
✕ Bridge/Culvert: Negligible

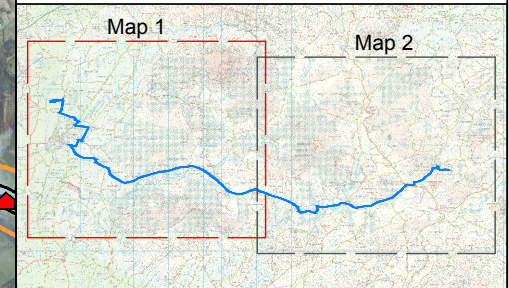
🏠 Buildings: High  
🏠 Buildings: Moderate  
🏠 Buildings: Low

🌳 Tree: Moderate  
🌳 Tree: Low

#### Map Information:

● Static Detector Locations and  
Identification Number

#### Keyplan:



Project:

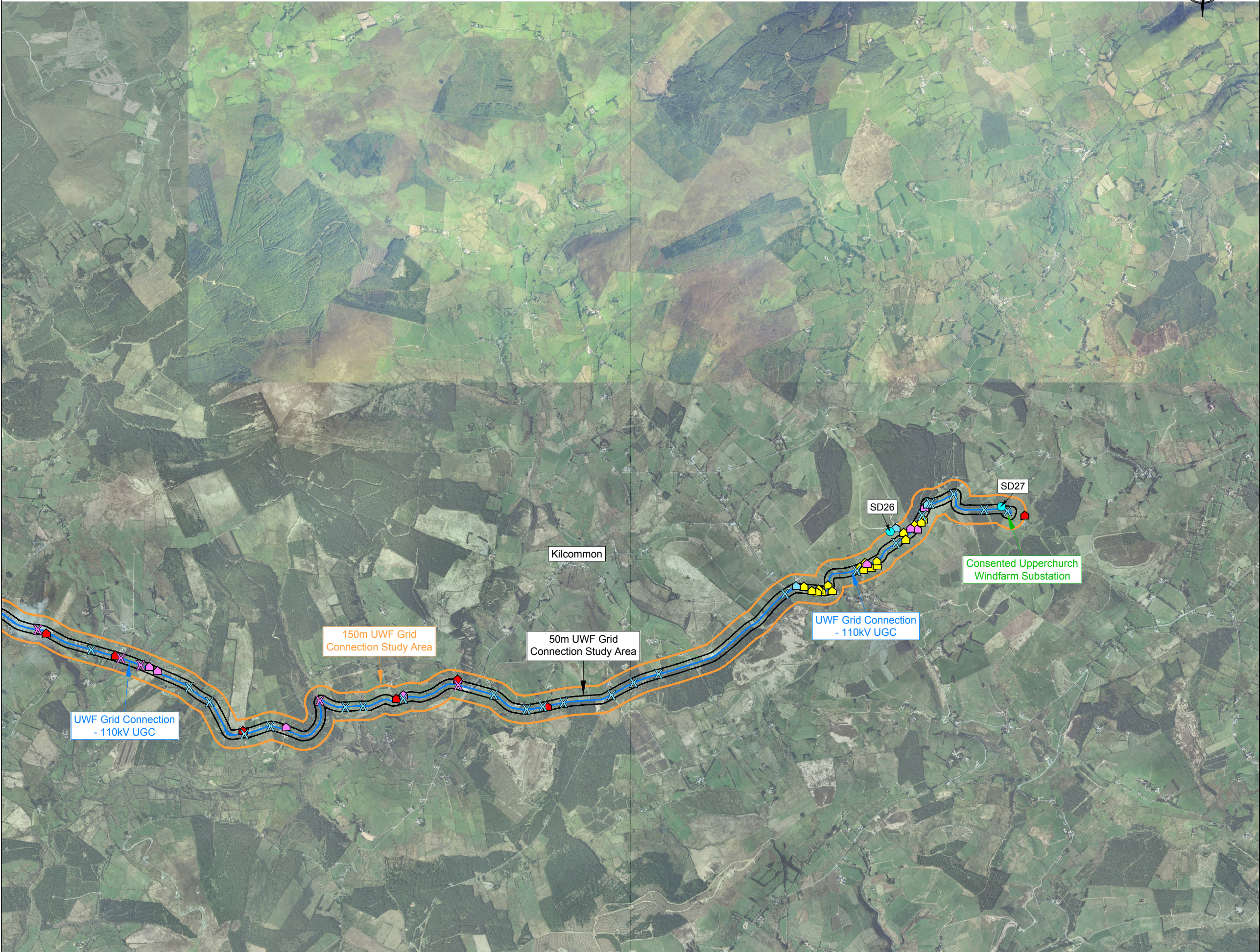
UWF Grid Connection (2019)

Drawn by:	Checked by:	Date:	Sheet Size:
AB	PK	October 19	A3

  
Aoife Butler  
Ecopower Developments Ltd  
Zetec House,  
Purcellsinn Business Park, Kilkenny  
TEL: +353 56 7750140  
MOB: +353 83 8805644

**ECOPOWER**





Biodiversity: Bats

**Figure GC 8.8.3**

UWF Grid Connection  
Study Area for Bats

Map Number:  
Map 2 of 2

**Legend:**

Subject Development:

— UWF Grid Connection  
Construction Works Area

Study Area Extents :

— 150m Study Area  
- UWF Grid Connection  
Construction Works Area

— 50m Study Area  
- UWF Grid Connection  
Construction Works Area

Survey Results :

Bat Roost Suitability :

✕ Bridge/Culvert: Moderate

✕ Bridge/Culvert: Negligible

🏠 Buildings: High

🏠 Buildings: Moderate

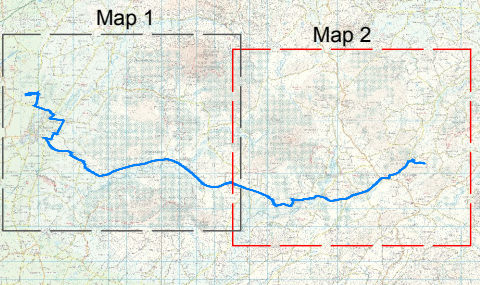
🏠 Buildings: Low

🏠 Buildings: Negligible

Map Information:

● Static Detector Locations and  
Identification Number

Keyplan:



Project:  
UWF Grid Connection (2019)

Drawn by:	Checked by:	Date:	Sheet Size:
AB	PK	October 19	A3



Aoife Butler  
Ecopower Developments Ltd  
Zetec House,  
Purcellsinn Business Park, Kilkenny  
TEL: +353 56 7750140  
MOB: +353 83 8805644

**ECOPOWER**









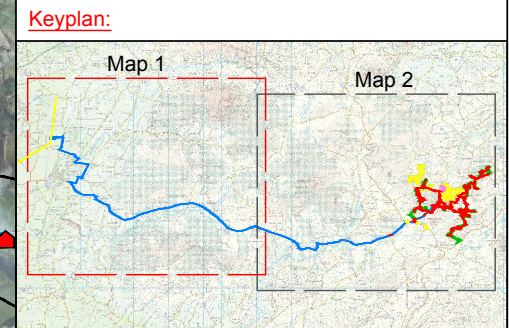
Biodiversity: Bats

**Figure CE 8.8.2**

UWF Grid Connection Cumulative Evaluation Study Area for Bats

Map Number:  
Map 1 of 2

- Legend:
- Subject Development:**
- UWF Grid Connection Construction Works Area
- Cumulative Evaluation Projects:**
- UWF Other Activities:
    - Killonan Line
- Study Area Extents:**
- 300m Study Area
    - UWF Grid Connection Construction Works Area
- Survey Results :**
- Bat Roost Suitability :
- Bridge/Culvert: Moderate
  - Bridge/Culvert: Low
  - Bridge/Culvert: Negligible
  - Buildings: High
  - Buildings: Moderate
  - Buildings: Low
  - Tree: Moderate
  - Tree: Low



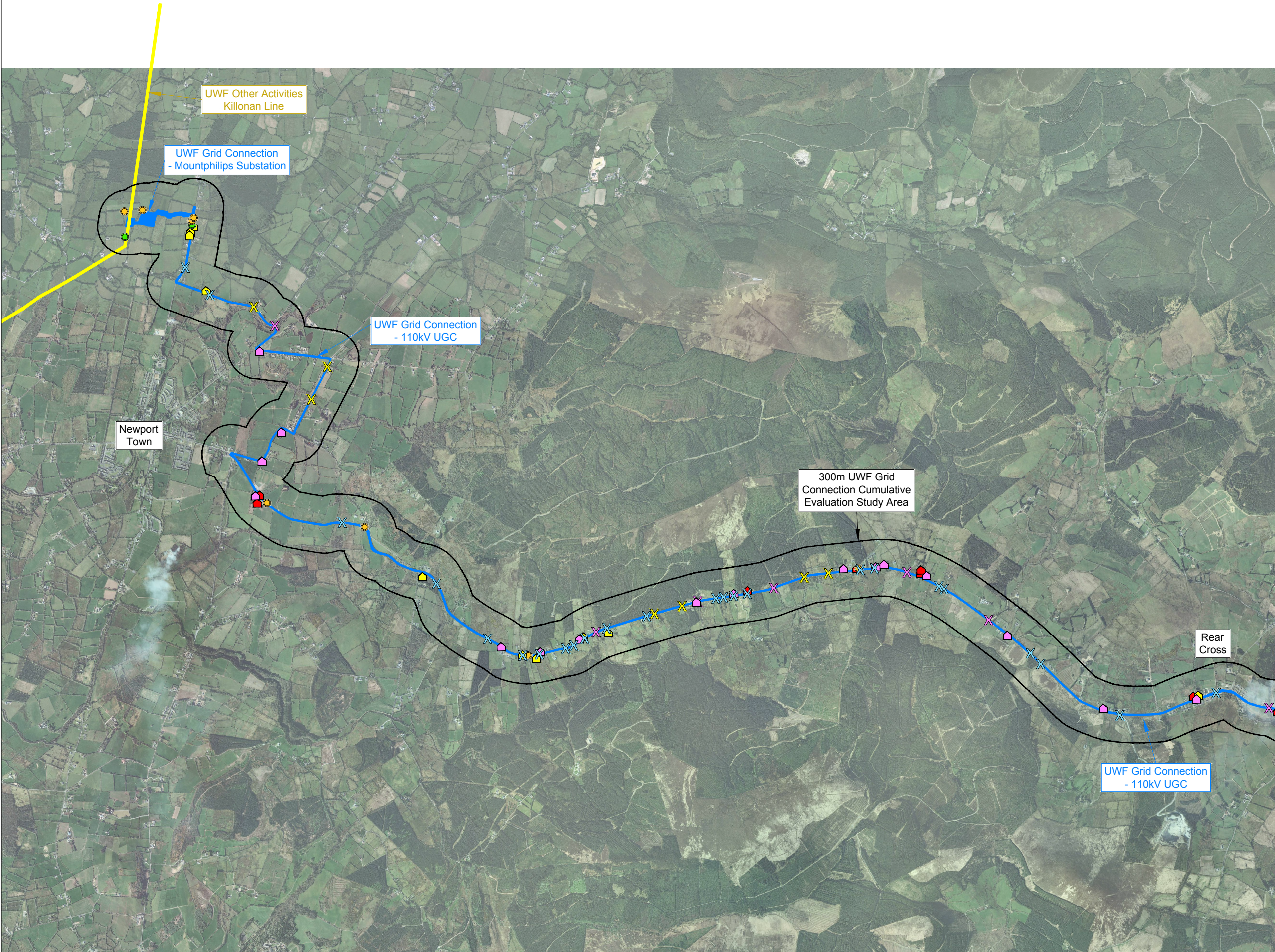
Project:  
UWF Grid Connection (2019)

Drawn by:	Checked by:	Date:	Sheet Size:
AB	PK	October 19	A3



Aoife Butler  
Ecopower Developments Ltd  
Zetec House,  
Purcellsinnh Business Park, Kilkenny  
TEL: +353 56 7750140  
MOB: +353 83 8805644

**ECOPOWER**





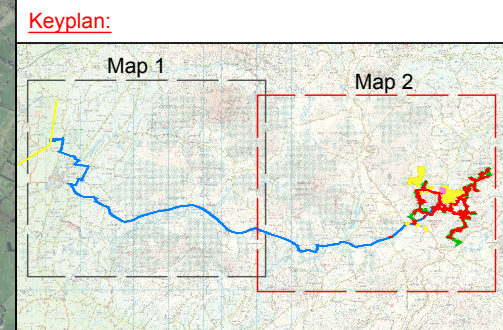


Biodiversity: Bats  
**Figure CE 8.8.3**  
UWF Grid Connection Cumulative  
Evaluation Study Area for Bats

Map Number:  
Map 2 of 2

- Legend:
- Subject Development:
- UWF Grid Connection Construction Works Area
- Cumulative Evaluation Projects :
- UWF Related Works Construction Works Area
  - Upperchurch Windfarm Construction Works Area
- UWF Other Activities:
- Upperchurch Hen Harrier Scheme
  - Haul Route Activities
- Study Area Extents :
- 300m Study Area
  - UWF Grid Connection Construction Works Area

- Survey Results :
- Bat Roost Suitability :
- Bridge/Culvert: Moderate
  - Bridge/Culvert: Negligible
  - Buildings: High
  - Buildings: Moderate
  - Buildings: Low
  - Buildings: Negligible



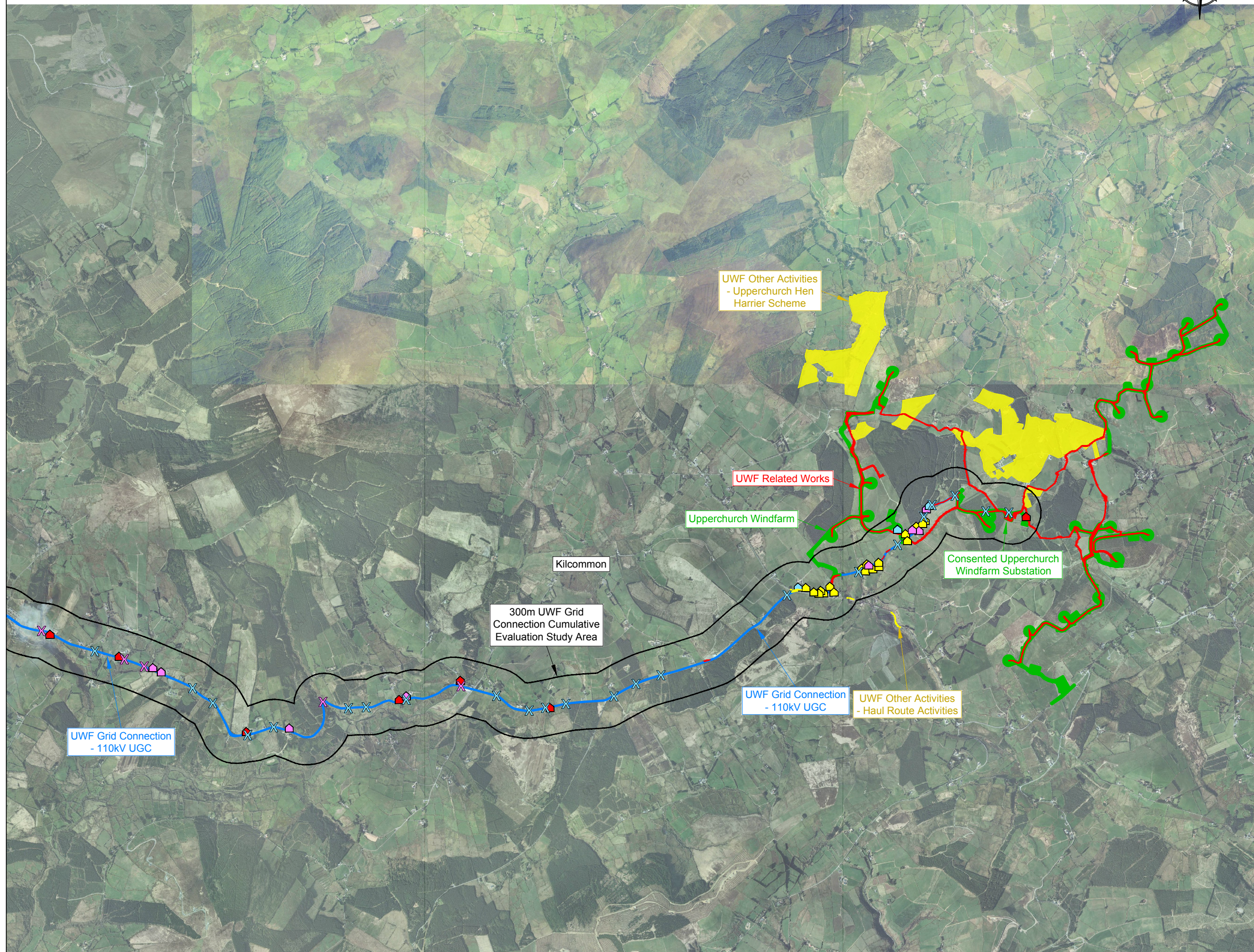
Project:  
UWF Grid Connection (2019)

Drawn by:	Checked by:	Date:	Sheet Size:
AB	PK	October 19	A3



Aoife Butler  
Ecopower Developments Ltd  
Zetec House,  
Purcellsinch Business Park, Kilkenny  
TEL: +353 56 7750140  
MOB: +353 83 8805644

**ECOPOWER**





**Figure WP 8.8.1**  
Whole Project Study Area for Bats

Map Number:  
Overview Map

Legend:

**Elements of the Whole UWF Project:**

- UWF Grid Connection Construction Works Area
- UWF Related Works Construction Works Area
- Upperchurch Windfarm Construction Works Area

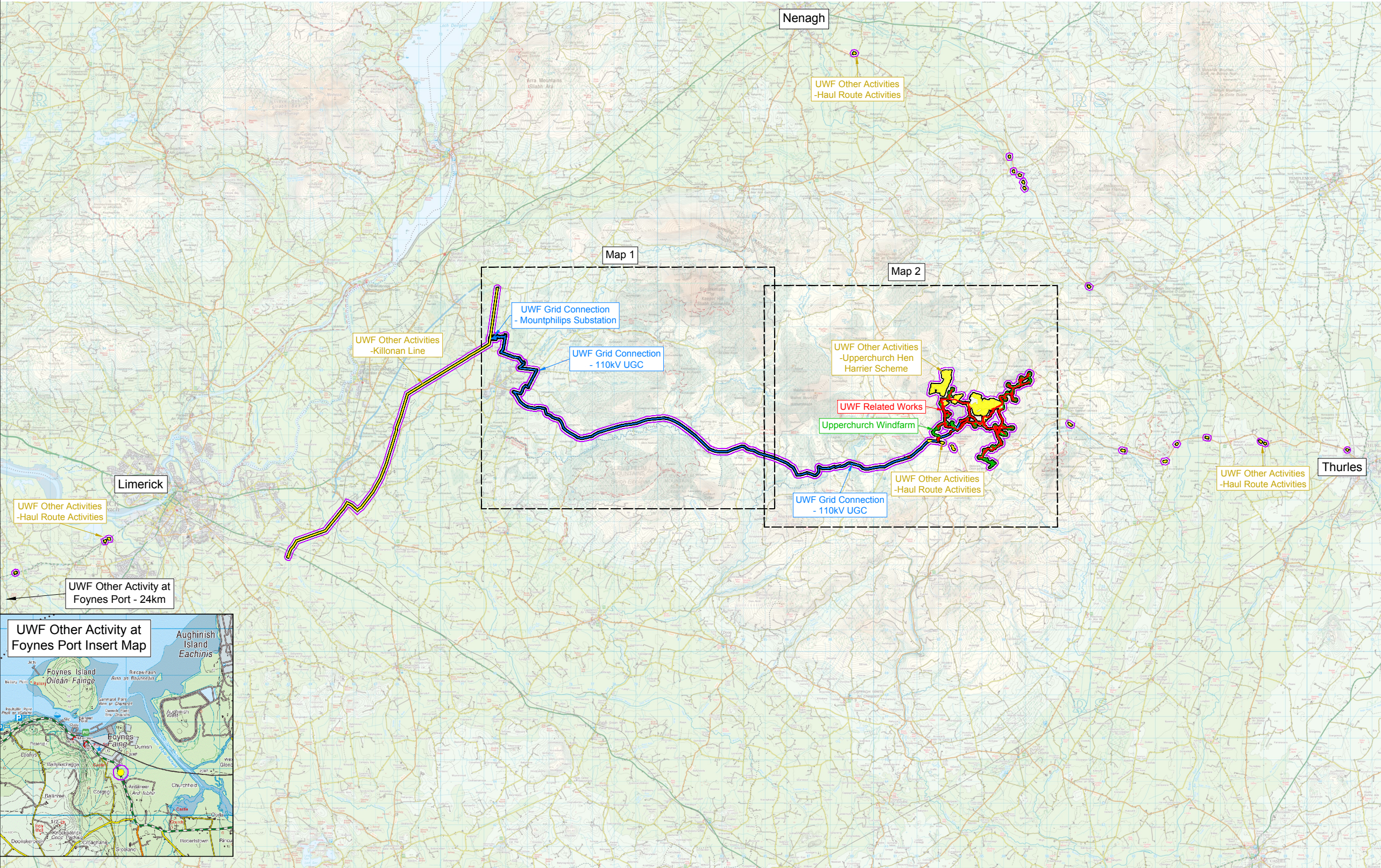
- UWF Other Activities:
- Upperchurch Hen Harrier Scheme
  - Haul Route Activities
  - Killonan Line

**Study Area Extents:**

- 50m Study Area from all Construction Works Area
- 150m Study Area from all Construction Works Area

**Survey Results:**

Survey Results shown in map 1 and map 2 over



Project:  
UWF Grid Connection (2019)

Drawn by:	Checked by:	Date:	Sheet Size:
AB	PK	October 19	A3



**ECOPOWER**

Aoife Butler  
Ecopower Developments Ltd  
Zetec House,  
Purcellsinn Business Park, Kilkenny  
TEL: +353 56 7750140  
MOB: +353 83 8805644

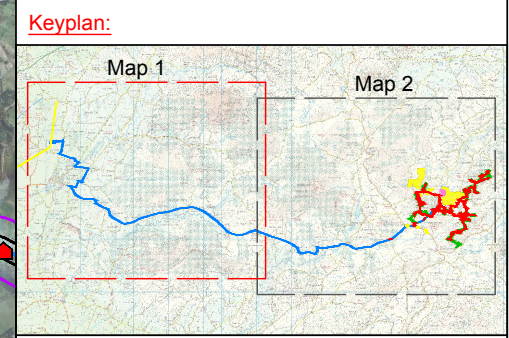
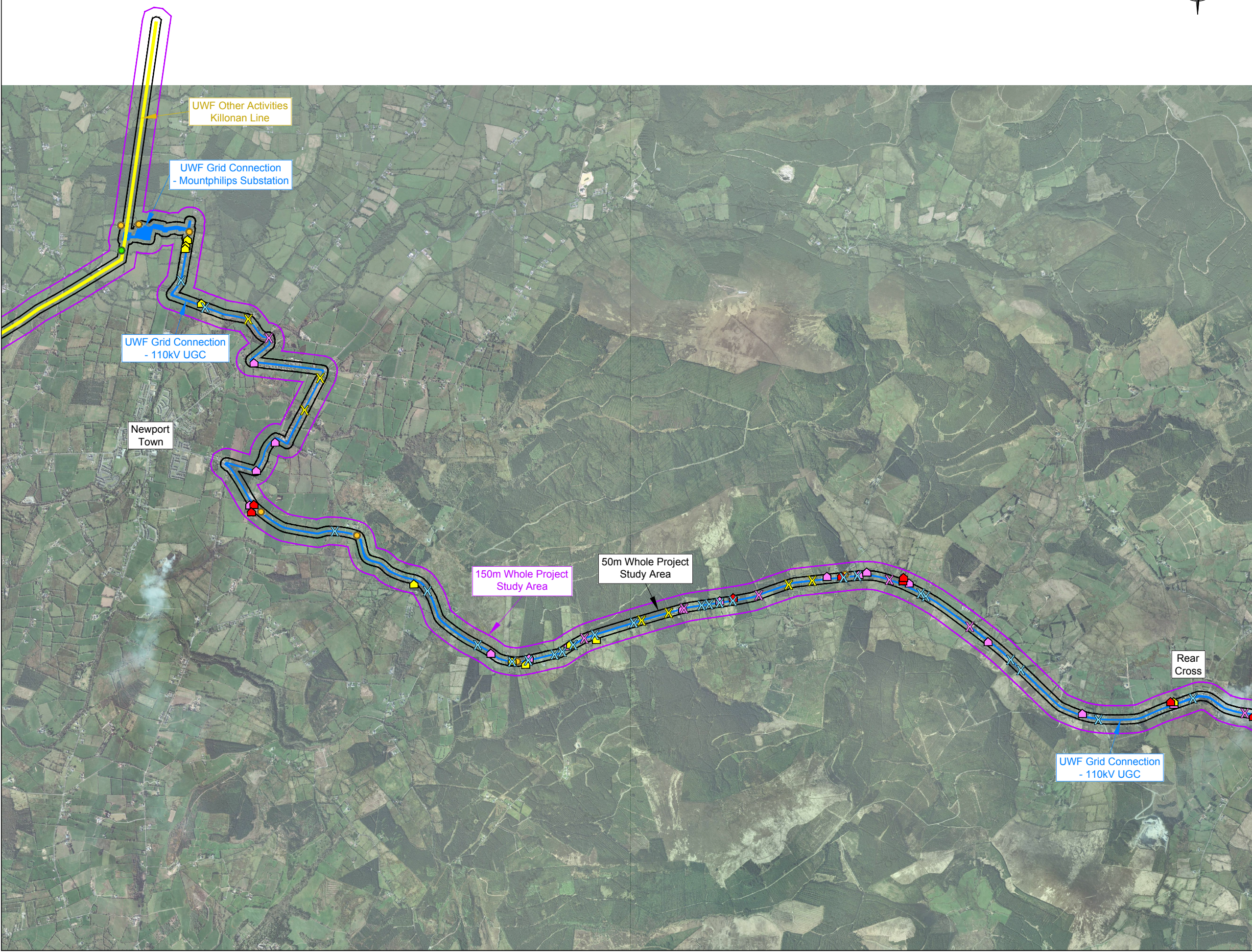




Biodiversity: Bats  
**Figure WP 8.8.2**  
Whole Project Study Area for Bats

Map Number:  
Map 1 of 2

- Legend:
- Elements of the Whole UWF Project:
- UWF Grid Connection Construction Works Area
  - UWF Other Activities:
    - Killonan Line
- Study Area Extents:
- 150m Study Area from all of the Construction Works Area
  - 50m Study Area from all of the Construction Works Area
- Survey Results:
- Bat Roost Suitability:
- Bridge/Culvert: Moderate
  - Bridge/Culvert: Low
  - Bridge/Culvert: Negligible
  - Buildings: High
  - Buildings: Moderate
  - Buildings: Low
  - Buildings: Negligible
  - Tree: Moderate
  - Tree: Low



Project:  
UWF Grid Connection (2019)

Drawn by:	Checked by:	Date:	Sheet Size:
AB	PK	October 19	A3



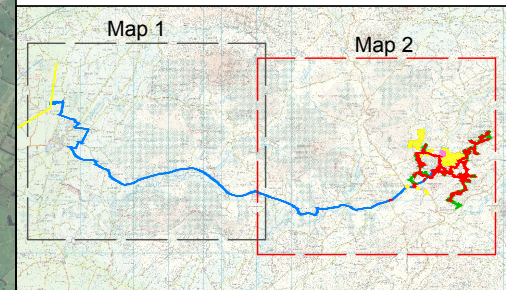
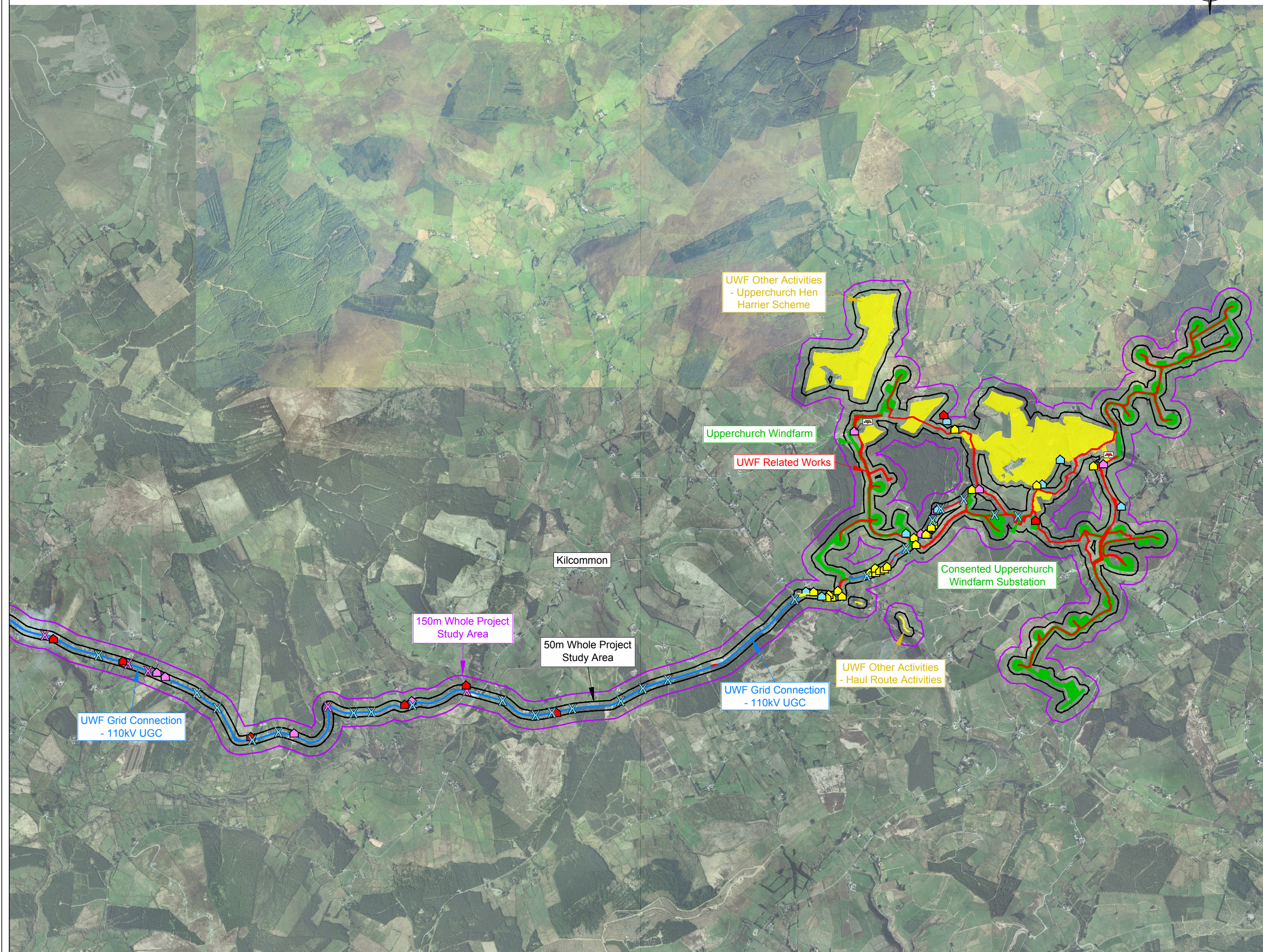
Aoife Butler  
Ecopower Developments Ltd  
Zetec House,  
Purcellsinch Business Park, Kilkenny  
TEL: +353 56 7750140  
MOB: +353 83 8805644

**ECOPOWER**





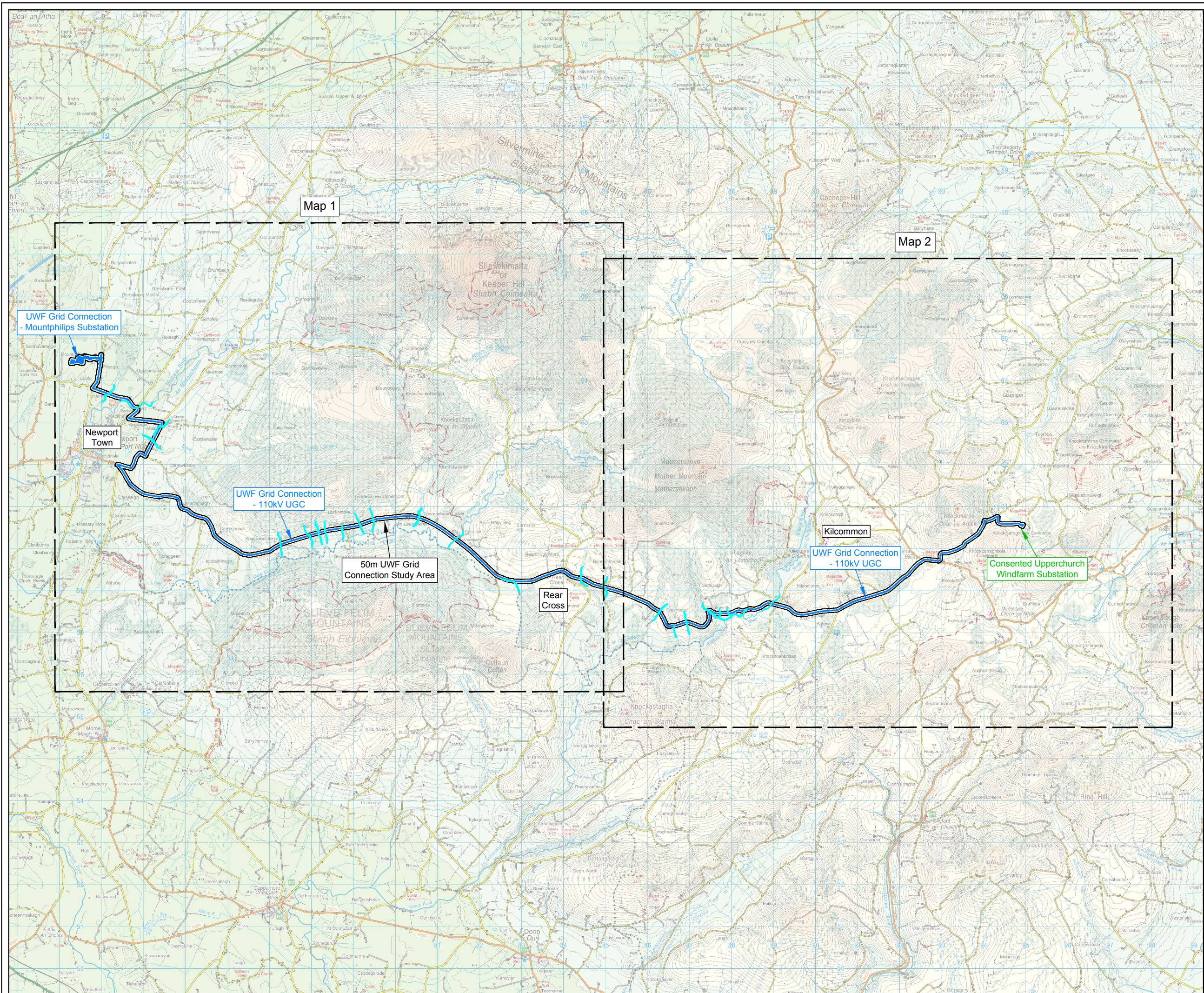
- Legend:
- Elements of the Whole UWF Project:**
- UWF Grid Connection Construction Works Area
  - UWF Related Works Construction Works Area
  - Upperchurch Windfarm Construction Works Area
  - UWF Other Activities:
    - Upperchurch Hen Harrier Scheme
    - Haul Route Activities
- Study Area Extents:**
- 150m Study Area from all of the Construction Works Area
  - 50m Study Area from all of the Construction Works Area
- Survey Results:**
- Bat Roost Suitability:
- Bat Crossing Location
  - Bridge/Culvert: Moderate
  - Bridge/Culvert: Negligible
  - Buildings: High
  - Buildings: Moderate
  - Buildings: Low
  - Buildings: Negligible
- Keyplan:**



Project:  
UWF Grid Connection (2019)

Drawn by:	Checked by:	Date:	Sheet Size:
AB	PK	October 19	A3





Biodiversity: Non-Volant Mammals  
**Figure GC 8.9.1**  
UWF Grid Connection Study Area  
for Non-Volant Mammals

Map Number:  
Overview Map

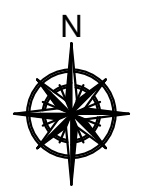
Legend:

Subject Development:

— UWF Grid Connection  
Construction Works Area

Study Area Extents:

— 50m Study Area  
- UWF Grid Connection  
Construction Works Area  
  
— 300m Study Area upstream and  
downstream of watercourse crossing  
with suitable Otter habitat



Project:  
UWF Grid Connection (2019)

Drawn by:	Checked by:	Date:	Sheet Size:
AB	PK	October 19	A3



Aoife Butler  
Ecopower Developments Ltd  
Zetec House,  
Purcellsinch Business Park, Kilkenny  
TEL: +353 56 7750140  
MOB: +353 83 8805644

**ECOPOWER**





Biodiversity: Non-Volant Mammals  
**Figure GC 8.9.2**  
UWF Grid Connection Study Area  
for Non-Volant Mammals

Map Number:  
Map 1 of 2

**Legend:**

Subject Development:

— UWF Grid Connection  
Construction Works Area

Study Area Extents:

— 50m Study Area from the UWF Grid  
Connection Construction Works Area  
  
— 300m Study Area upstream and  
downstream of watercourse crossing  
with suitable Otter habitat

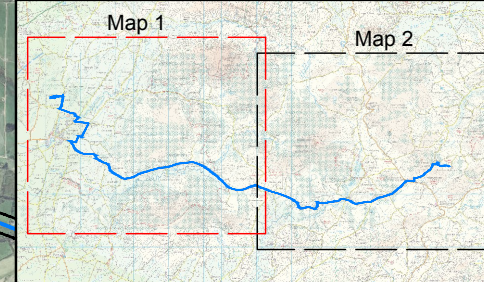
Survey Results:

- ▲ Fox
- ▲ Otter
- ▲ Mammal Pathways
- ▲ Badger
- ▲ Squirrel
- ▲ Deer
- ▲ Rat
- ▲ Greater White Toothed Shrew

Map Information:

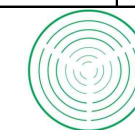
W7 Watercourse Crossing Locations

Keyplan:



Project:  
UWF Grid Connection (2019)

Drawn by:	Checked by:	Date:	Sheet Size:
AB	PK	October 19	A3



Aoife Butler  
Ecopower Developments Ltd  
Zetec House,  
Purcellsinch Business Park, Kilkenny  
TEL: +353 56 7750140  
MOB: +353 83 8805644

**ECOPOWER**







Biodiversity: Non-Volant Mammals

**Figure GC 8.9.3**

UWF Grid Connection Study Area  
for Non-Volant Mammals

Map Number:  
Map 2 of 2

**Legend:**

Subject Development:

— UWF Grid Connection  
Construction Works Area

Study Area Extents:

— 50m Study Area from the UWF Grid  
Connection Construction Works Area

— 300m Study Area upstream and  
downstream of watercourse crossing  
with suitable Otter habitat

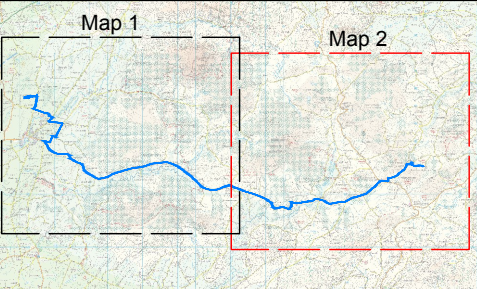
Survey Results :

- ▲ Otter
- ▲ Mammal Pathways
- ▲ Badger
- △ Deer
- ▲ Pine Marten

Map Information:

W7 Watercourse Crossing Locations

Keyplan:



Project:  
UWF Grid Connection (2019)

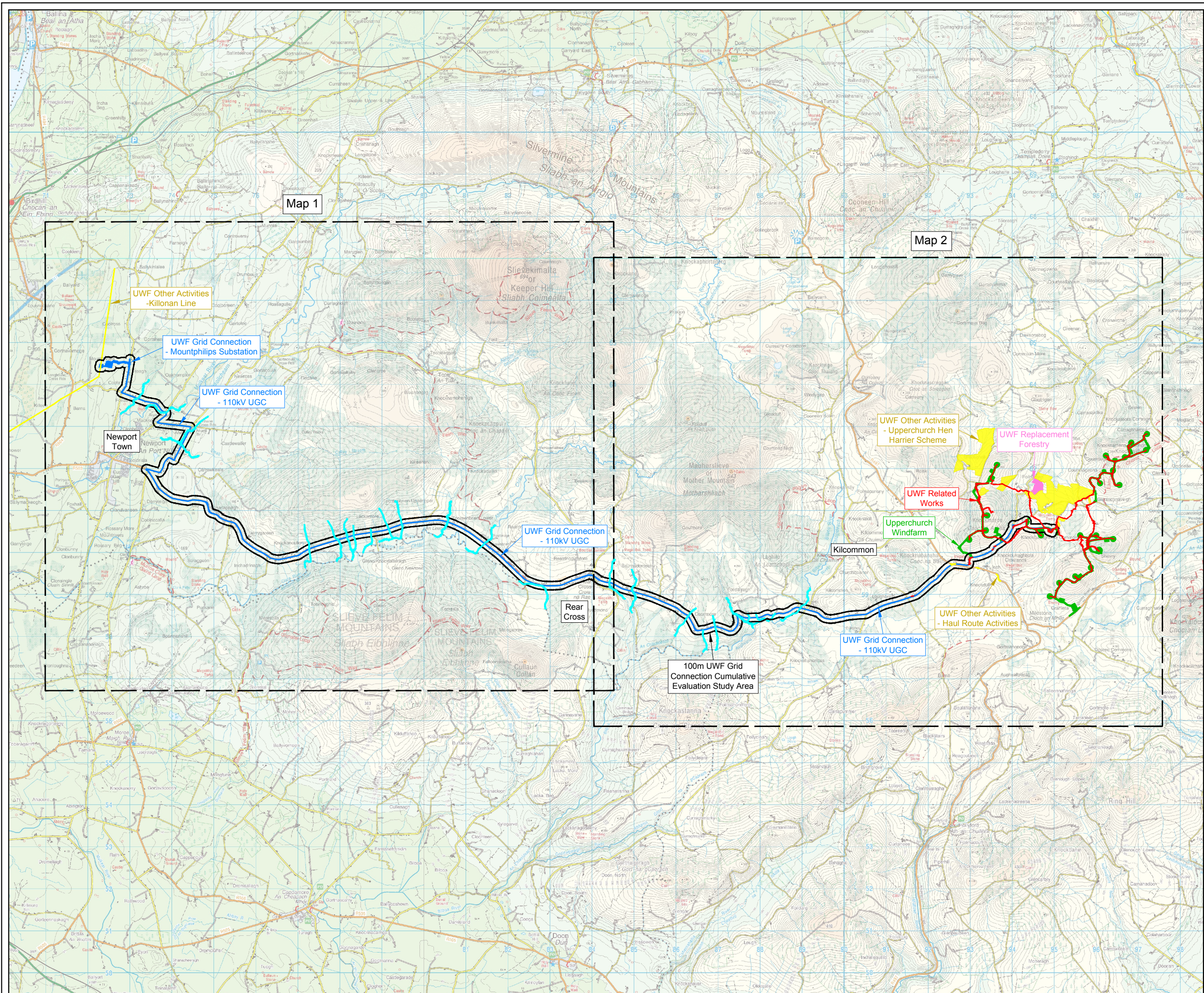
Drawn by:	Checked by:	Date:	Sheet Size:
AB	PK	October 19	A3



Aoife Butler  
Ecopower Developments Ltd  
Zetec House,  
Purcellsinch Business Park, Kilkenny  
TEL: +353 56 7750140  
MOB: +353 83 8805644

**ECOPOWER**





Biodiversity: Non-Volant Mammals  
**Figure CE 8.9.1**  
UWF Grid Connection Cumulative  
Evaluation Study Area for  
Non-Volant Mammals

Map Number:  
Overview Map

Legend:

Subject Development:

— UWF Grid Connection  
Construction Works Area

Cumulative Evaluation Projects:

- UWF Related Works  
Construction Works Area
- Upperchurch Windfarm  
Construction Works Area
- UWF Replacement Forestry  
Construction Works Area

UWF Other Activities:  
- Upperchurch Hen Harrier Scheme  
- Haul Route Activities  
- Killonan Line

Study Area Extents:

- 100m Study Area  
- UWF Grid Connection  
Construction Works Area
- 600m Study Area upstream and  
downstream of watercourse crossing  
with suitable Otter habitat

Project:  
UWF Grid Connection (2019)

Drawn by:	Checked by:	Date:	Sheet Size:
AB	PK	October 19	A3





Biodiversity: Non-Volant Mammals  
**Figure CE 8.9.2**  
UWF Grid Connection Cumulative  
Evaluation Study Area for  
Non-Volant Mammals

Map Number:  
Map 1 of 2

Legend:

Subject Development:

— UWF Grid Connection  
Construction Works Area

Cumulative Evaluation Projects :

— UWF Other Activities: Killonan Line

Survey Results :

- ▲ Fox
- ▲ Otter
- ▲ Mammal Pathways
- ▲ Badger
- ▲ Squirrel
- ▲ Deer
- ▲ Rat
- ▲ Greater White Toothed Shrew

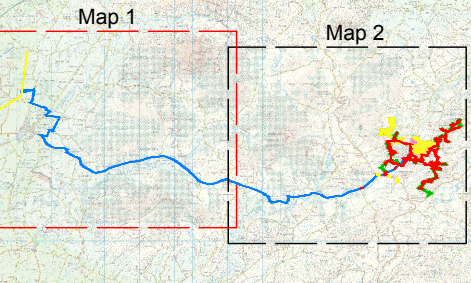
Study Area Extents:

- 100m Study Area from UWF Grid  
Connection Construction Works Area
- 600m Study Area upstream and  
downstream of watercourse crossing  
with suitable Otter habitat

Map Information:

W7 Watercourse Crossing Locations

Keyplan:



Project:  
UWF Grid Connection (2019)

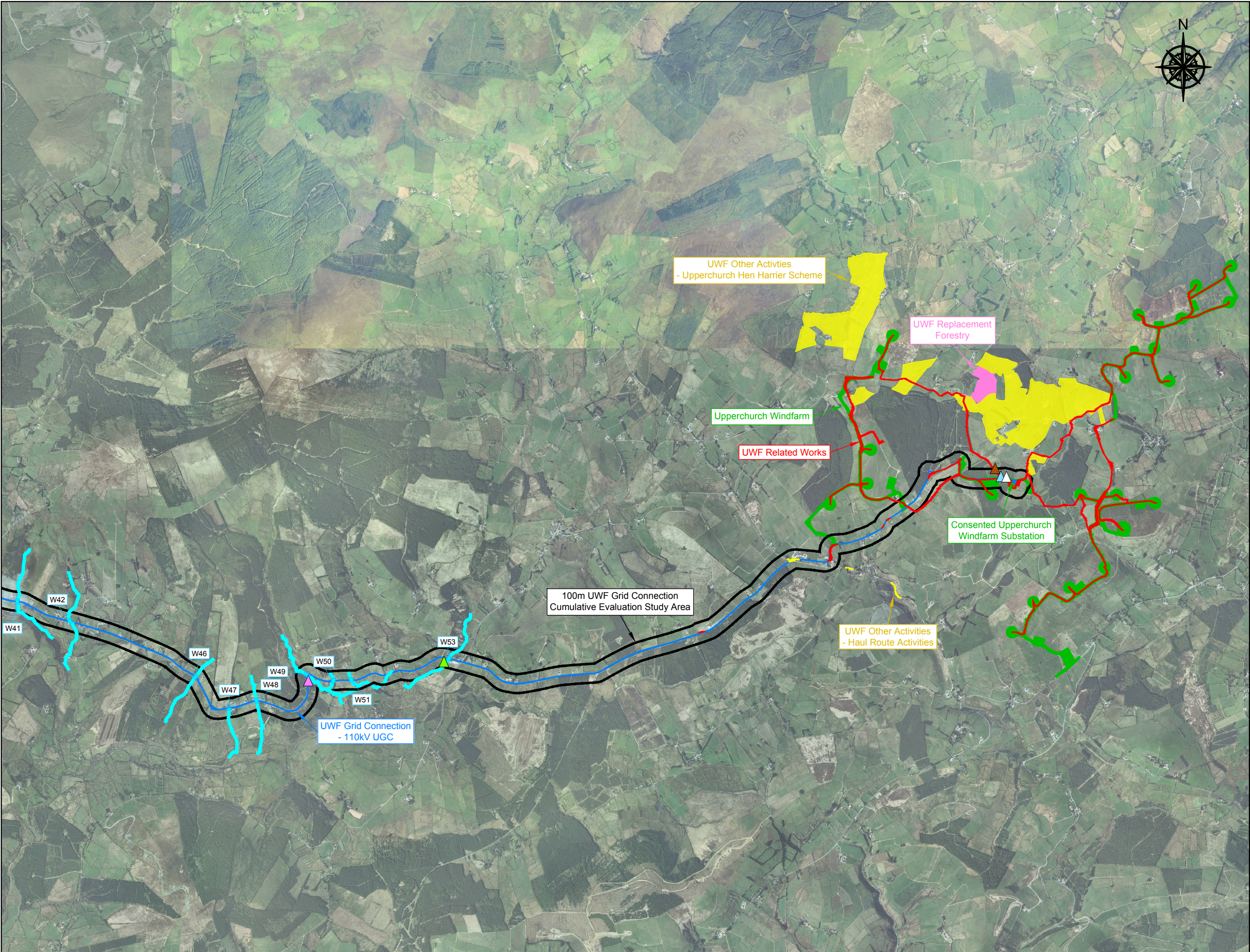
Drawn by:	Checked by:	Date:	Sheet Size:
AB	PK	October 19	A3



Aoife Butler  
Ecopower Developments Ltd  
Zetec House,  
Purcellsinn Business Park, Kilkenny  
TEL: +353 56 7750140  
MOB: +353 83 8805644

**ECOPOWER**





Biodiversity: Non-Volant Mammals

**Figure CE 8.9.3**

UWF Grid Connection Cumulative Evaluation Study Area for Non-Volant Mammals

Map Number:  
Map 2 of 2

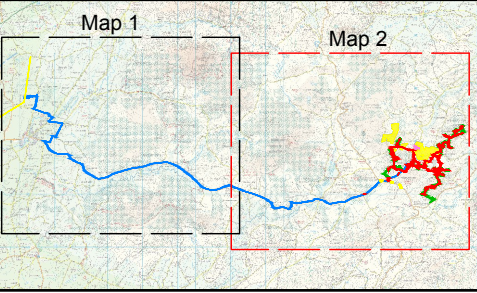
- Legend:
- Subject Development:
- UWF Grid Connection Construction Works Area
- Cumulative Evaluation Projects:
- UWF Related Works Construction Works Area
  - Upperchurch Windfarm Construction Works Area
  - UWF Replacement Forestry Construction Works Area
- UWF Other Activities:
- Upperchurch Hen Harrier Scheme
  - Haul Route Activities

- Survey Results :
- ▲ Otter
  - ▲ Mammal Pathways
  - ▲ Badger
  - ▲ Deer
  - ▲ Pine Marten
- Study Area Extents:
- 100m Study Area from UWF Grid Connection Construction Works Area
  - 600m Study Area upstream and downstream of watercourse crossing with suitable Otter habitat

Map Information:

W7 Watercourse Crossing Locations

Keyplan:



Project:  
UWF Grid Connection (2019)

Drawn by:	Checked by:	Date:	Sheet Size:
AB	PK	October 19	A3



Biodiversity: Non-Volant Mammals  
**Figure WP 8.9.1**

Whole Project Study Area  
for Non Volant Mammals

Map Number:  
Overview Map

Legend:

Elements of the Whole UWF Project:

— UWF Grid Connection  
Construction Works Area

— UWF Related Works  
Construction Works Area

— Upperchurch Windfarm  
Construction Works Area

— UWF Replacement Forestry  
Construction Works Area

UWF Other Activities:  
- Upperchurch Hen Harrier Scheme  
- Haul Route Activities  
- Killonan Line

Study Area Extents:

— 50m Study Area from all  
Construction Works Area

— 300m Study Area upstream and  
downstream of watercourse crossing  
with suitable Otter habitat

● Survey at UWF Related Works  
watercourse crossing for presence  
of Otter or Otter habitat

Survey Results:

Survey Results shown on Map 1 and Map 2 over

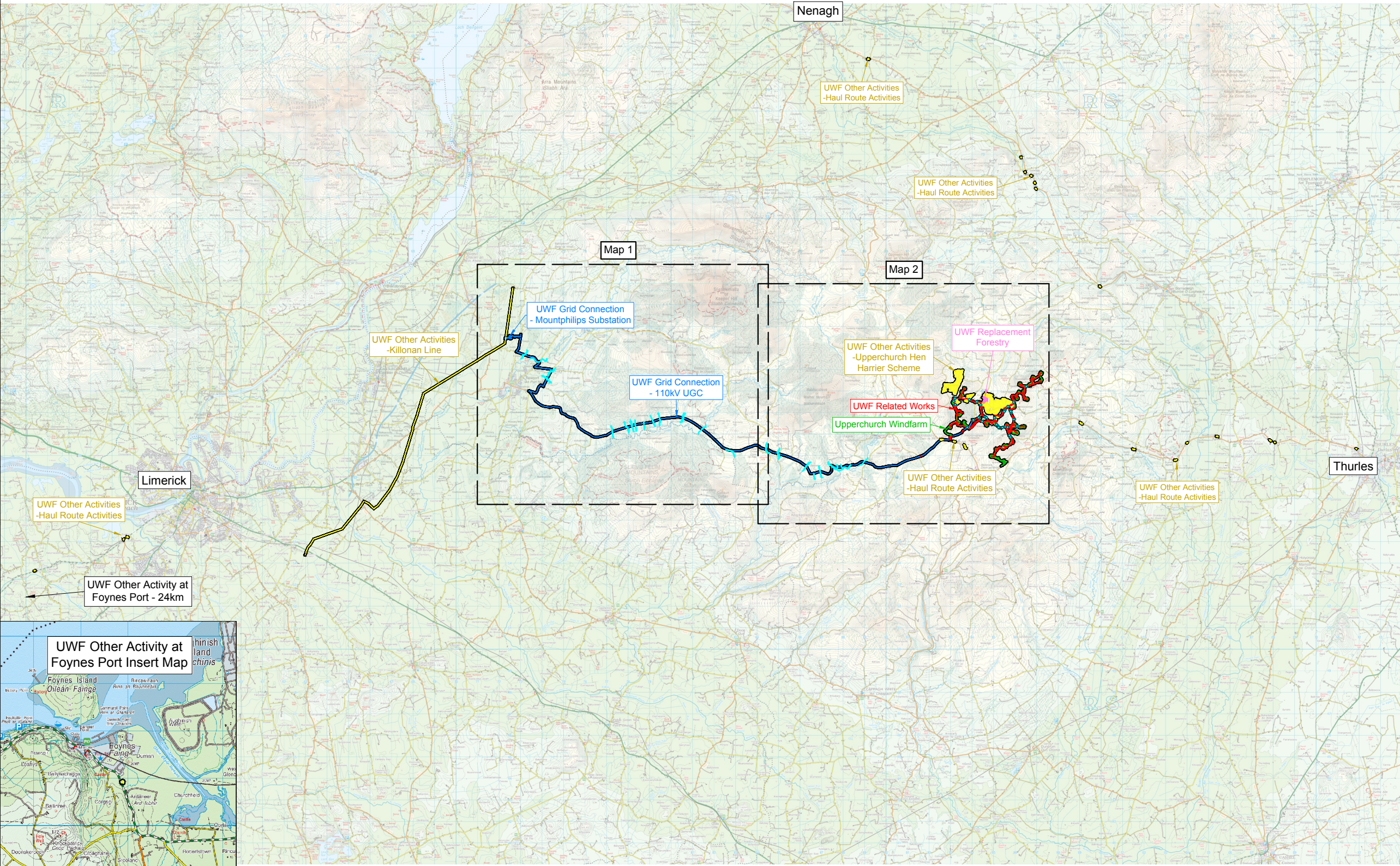
Project:  
UWF Grid Connection (2019)

Drawn by:	Checked by:	Date:	Sheet Size:
AB	PK	October 19	A3



Aoife Butler  
Ecopower Developments Ltd  
Zetec House,  
Purcellsinn Business Park, Kilkenny  
TEL: +353 56 7750140  
MOB: +353 83 8805644

**ECOPOWER**







Biodiversity: Non-Volant Mammals

**Figure WP 8.9.2**

Whole Project Study Area  
for Non Volant Mammals

Map Number:  
Map 1 of 2

**Legend:**

Elements of the Whole UWF Project:

- UWF Grid Connection Construction Works Area
- UWF Other Activities: Killonan Line

Study Area Extents:

- 50m Study Area from all Construction Works Area
- 300m Study Area upstream and downstream of watercourse crossing with suitable Otter habitat

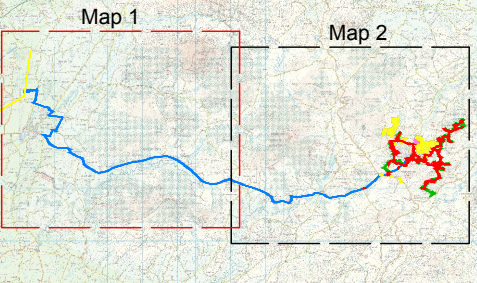
Survey Results:

- Fox
- Otter
- Mammal Pathways
- Badger
- Squirrel
- Deer
- Rat
- Greater White Toothed Shrew

Map Information:

- W7 Watercourse Crossing Locations

Keyplan:



Project:  
UWF Grid Connection (2019)

Drawn by:	Checked by:	Date:	Sheet Size:
AB	PK	October 19	A3



Aoife Butler  
Ecopower Developments Ltd  
Zetec House,  
Purcellsinn Business Park, Kilkenny  
TEL: +353 56 7750140  
MOB: +353 83 8805644

**ECOPOWER**





Biodiversity: Non-Volant Mammals

### Figure WP 8.9.3

Whole Project Study Area  
for Non Volant Mammals

Map Number:

Map 2 of 2

Legend:

#### Elements of the Whole UWF Project:

— UWF Grid Connection  
Construction Works Area

— UWF Related Works  
Construction Works Area

— Upperchurch Windfarm  
Construction Works Area

— UWF Replacement Forestry  
Construction Works Area

UWF Other Activities:

- Upperchurch Hen Harrier Scheme
- Haul Route Activities

#### Study Area Extents:

— 50m Study Area from all  
Construction Works Area

— 300m Study Area upstream and  
downstream of watercourse crossing  
with suitable Otter habitat

● Survey at UWF Related Works  
watercourse crossing for presence  
of Otter or Otter habitat

#### Survey Results:

▲ Otter

▲ Mammal Pathways

▲ Badger

▲ Deer

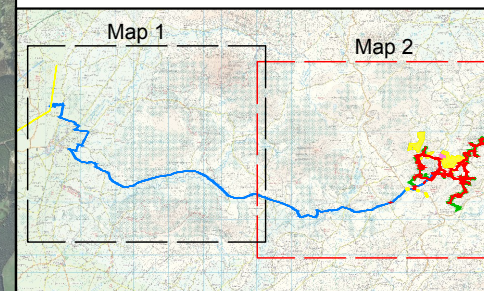
▲ Pine Marten

▲ Fox

#### Map Information:

W7 Watercourse Crossing Locations

#### Keyplan:



Project:  
UWF Grid Connection (2019)

Drawn by:	Checked by:	Date:	Sheet Size:
AB	PK	October 19	A3





Biodiversity: Amphibians & Reptiles

**Figure GC 8.10**

UWF Grid Connection Study Area for Amphibians & Reptiles

Map Number:

Map 1 of 1

Legend:

**Subject Development:**

- UWF Grid Connection Construction Works Area

**Study Area Extents :**

- 50m Study Area
- UWF Grid Connection Construction Works Area


**Survey Results :**

No Amphibians or Reptiles were recorded in 2019 surveys

Project:

UWF Grid Connection (2019)

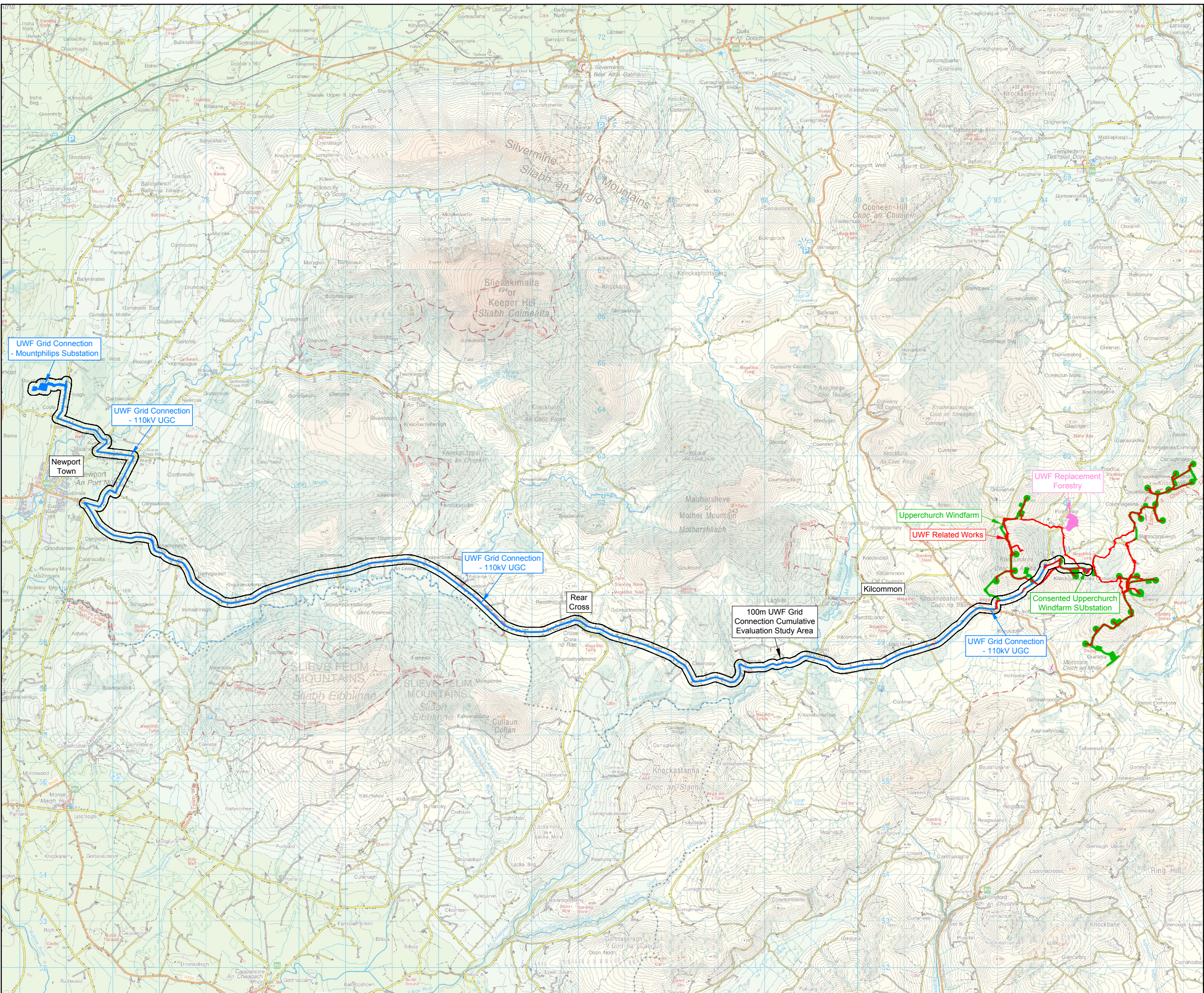
Drawn by:	Checked by:	Date:	Sheet Size:
AB	PK	October 19	A3



Aoife Butler  
Ecopower Developments Ltd  
Zetec House,  
Purcellsinch Business Park, Kilkenny  
TEL: +353 56 7750140  
MOB: +353 83 8805644

**ECOPOWER**





Biodiversity: Amphibians & Reptiles  
**Figure CE 8.10**

UWF Grid Connection Cumulative  
Evaluation Study Area for  
Amphibians & Reptiles

Map Number:  
Map 1 of 1

Legend:

Subject Development:

UWF Grid Connection  
Construction Works Area

Cumulative Evaluation Projects:

UWF Related Works  
Construction Works Area

Upperchurch Windfarm  
Construction Works Area

UWF Replacement Forestry  
Construction Works Area

Study Area Extents:

100m Study Area  
- UWF Grid Connection  
Construction Works Area

Survey Results :

No Amphibians or Reptiles were  
recorded in 2019 surveys



Project:  
UWF Grid Connection (2019)

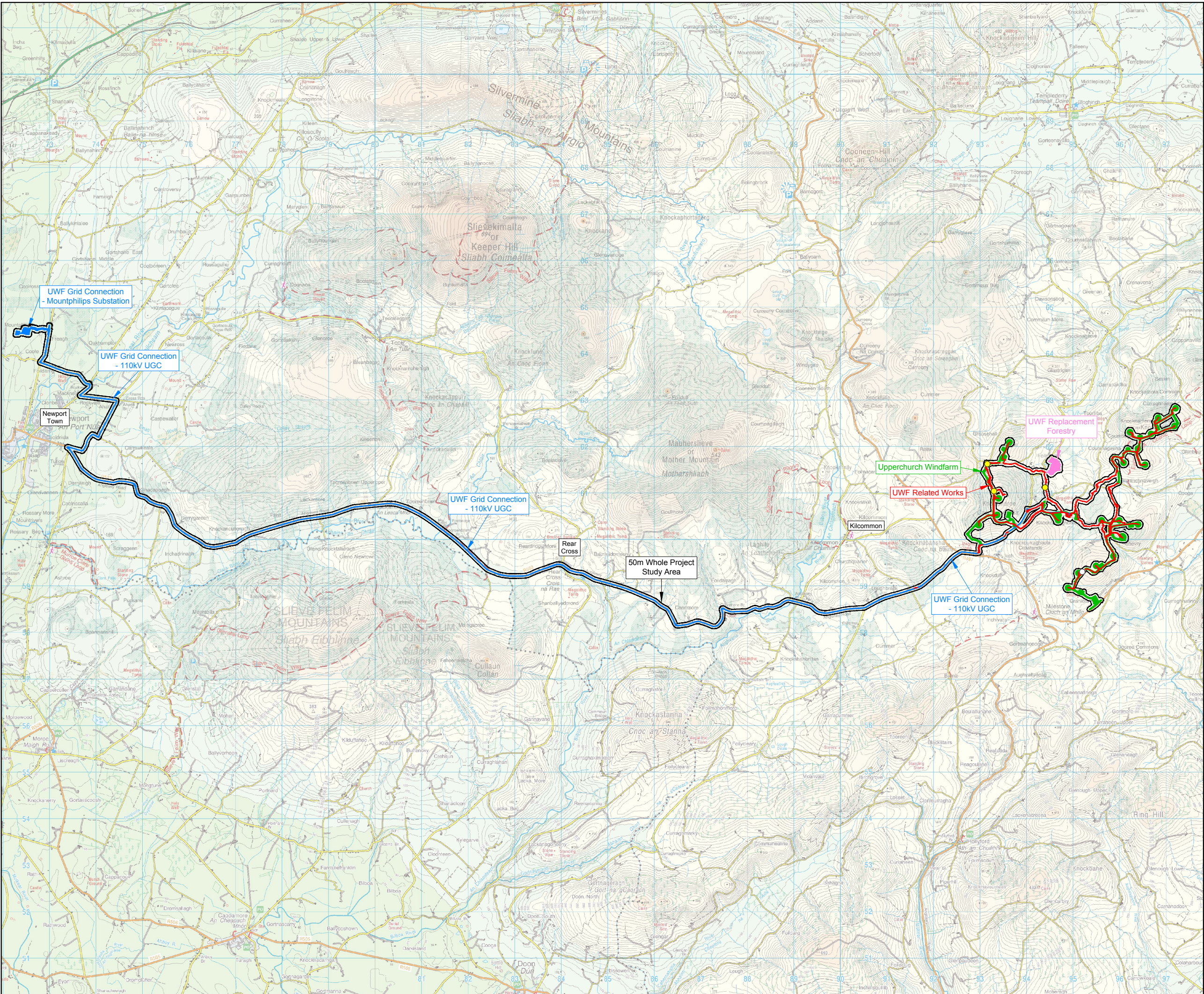
Drawn by:	Checked by:	Date:	Sheet Size:
AB	PK	October 19	A3



Aoife Butler  
Ecopower Developments Ltd  
Zetec House,  
Purcellsinch Business Park, Kilkenny  
TEL: +353 56 7750140  
MOB: +353 83 8805644

ECOPOWER





Biodiversity: Amphibians & Reptiles

**Figure WP 8.10**

Whole Project Study Area  
for Amphibians & Reptiles

Map Number:  
Map 1 of 1

Legend:

**Elements of the Whole UWF Project:**

- UWF Grid Connection Construction Works Area
- UWF Related Works Construction Works Area
- Upperchurch Windfarm Construction Works Area
- UWF Replacement Forestry Construction Works Area

**Study Area Extents:**

- 50m Study Area from Whole UWF Project Construction Works Area

**Survey Results:**

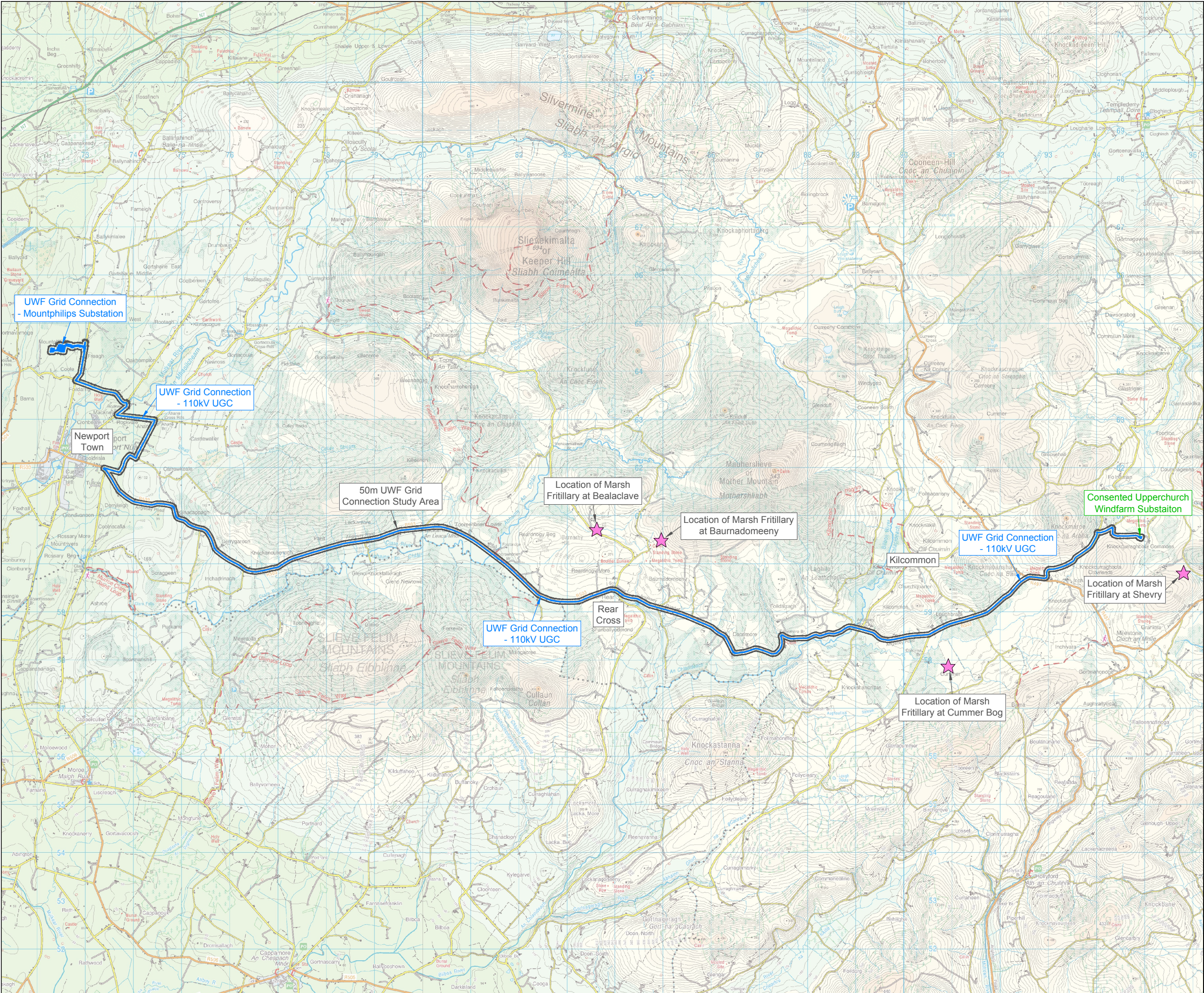
- Frog
- Viviparous Lizard

Project:  
UWF Grid Connection (2019)

Drawn by: AB	Checked by: PK	Date: October 19	Sheet Size: A3
-----------------	-------------------	---------------------	-------------------

Aoife Butler  
Ecopower Developments Ltd  
Zetec House,  
Purcellsinch Business Park, Kilkenny  
TEL: +353 56 7750140  
MOB: +353 83 8805644





Biodiversity: Marsh Fritillary

**Figure GC 8.11**

UWF Grid Connection Study Area for Marsh Fritillary

Map Number:

Map 1 of 1

Legend:

**Subject Development:**

- UWF Grid Connection Construction Works Area

**Study Area Extents:**

- 50m Study Area
- UWF Grid Connection Construction Works Area

**Survey Results:**

*Note:*  
There was no suitable habitat recorded within the UWF Grid Connection study area for Marsh Fritillary.

During 2017 surveys, three colonies of Marsh Fritillary were recorded - one colony each in Baunadomeeny and Bealacave townlands, with a third colony identified at Shevry townlands.


The proposed UWF Grid Connection 110kV UGC route on the R503 also passes to the north of Cumber Bog complex, where previous records of Marsh Fritillary have been documented

★ Marsh Fritillary Habitat Locations

Project:

UWF Grid Connection (2019)

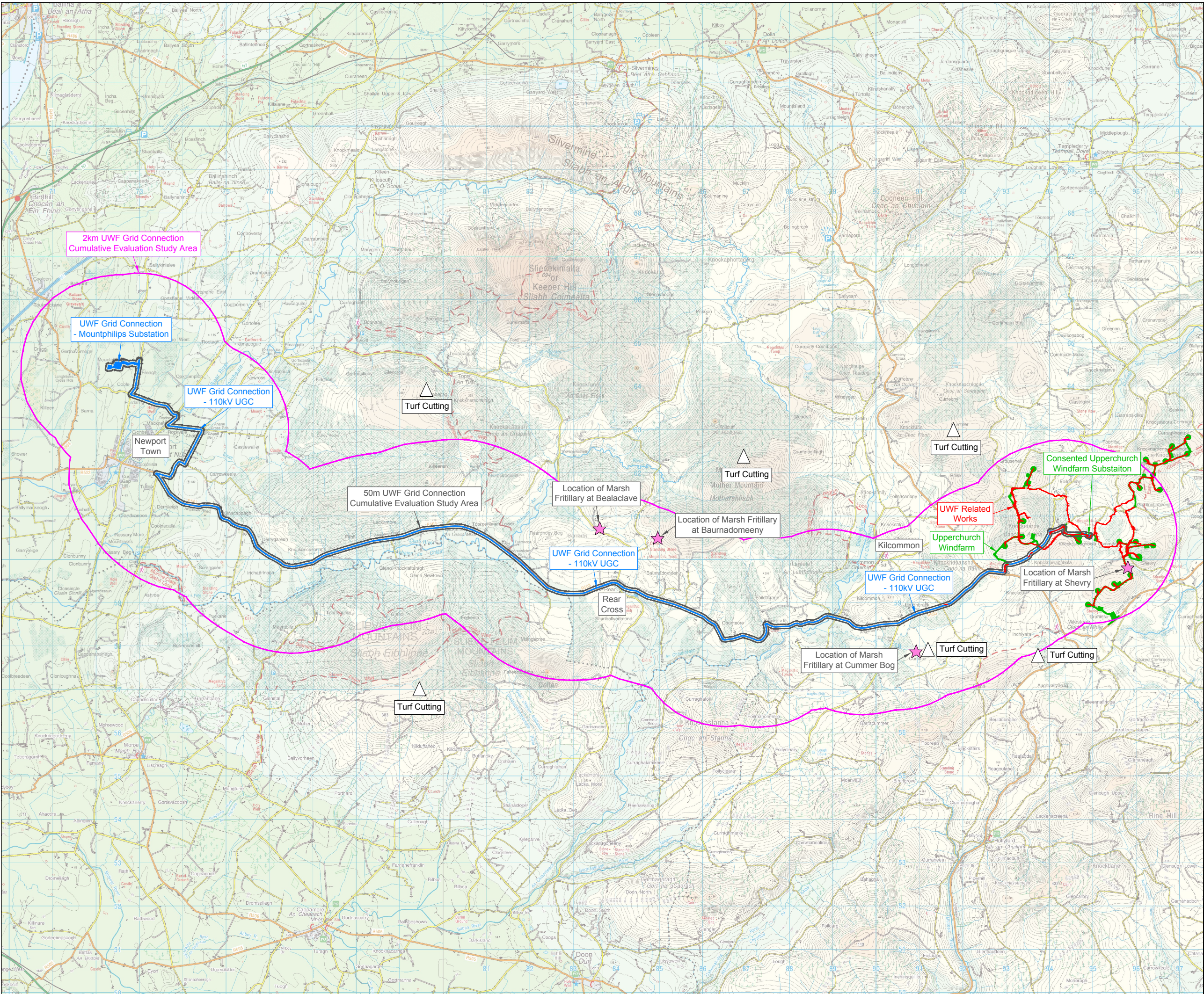
Drawn by:	Checked by:	Date:	Sheet Size:
AB	PK	October 19	A3



Aoife Butler  
Ecopower Developments Ltd  
Zetec House,  
Purcellsinch Business Park, Kilkenny  
TEL: +353 56 7750140  
MOB: +353 83 8805644

**ECOPOWER**





Biodiversity: Marsh Fritillary

**Figure CE 8.11**

UWF Grid Connection  
Cumulative Evaluation Study  
Area for Marsh Fritillary

Map Number:  
Map 1 of 1

Legend:

**Subject Development:**

- UWF Grid Connection Construction Works Area

**Cumulative Evaluation Projects:**

- UWF Related Works Construction Works Area
- Upperchurch Windfarm Construction Works Area
- Turf Cutting

*Forestry: Please see terrestrial habitats, figures 8.5, on aerial photography for reference purposes with respect to the extent of Forestry lands.*

**Study Area Extents:**

- 50m Study Area
  - UWF Grid Connection Construction Works Area
- 2km Study Area
  - UWF Grid Connection Construction Works Area

**Survey Results:**

*Note:*  
There was no suitable habitat recorded within the UWF Grid Connection study area for Marsh Fritillary.

*During 2017 surveys, three colonies of Marsh Fritillary were recorded - one colony each in Baumdomeeny and Bealaclave townlands, with a third colony identified at Shevry townlands.*

*The proposed UWF Grid Connection 110kV UGC route on the R503 also passes to the north of Cummer Bog complex, where previous records of Marsh Fritillary have been documented*

★ Marsh Fritillary Habitat Locations

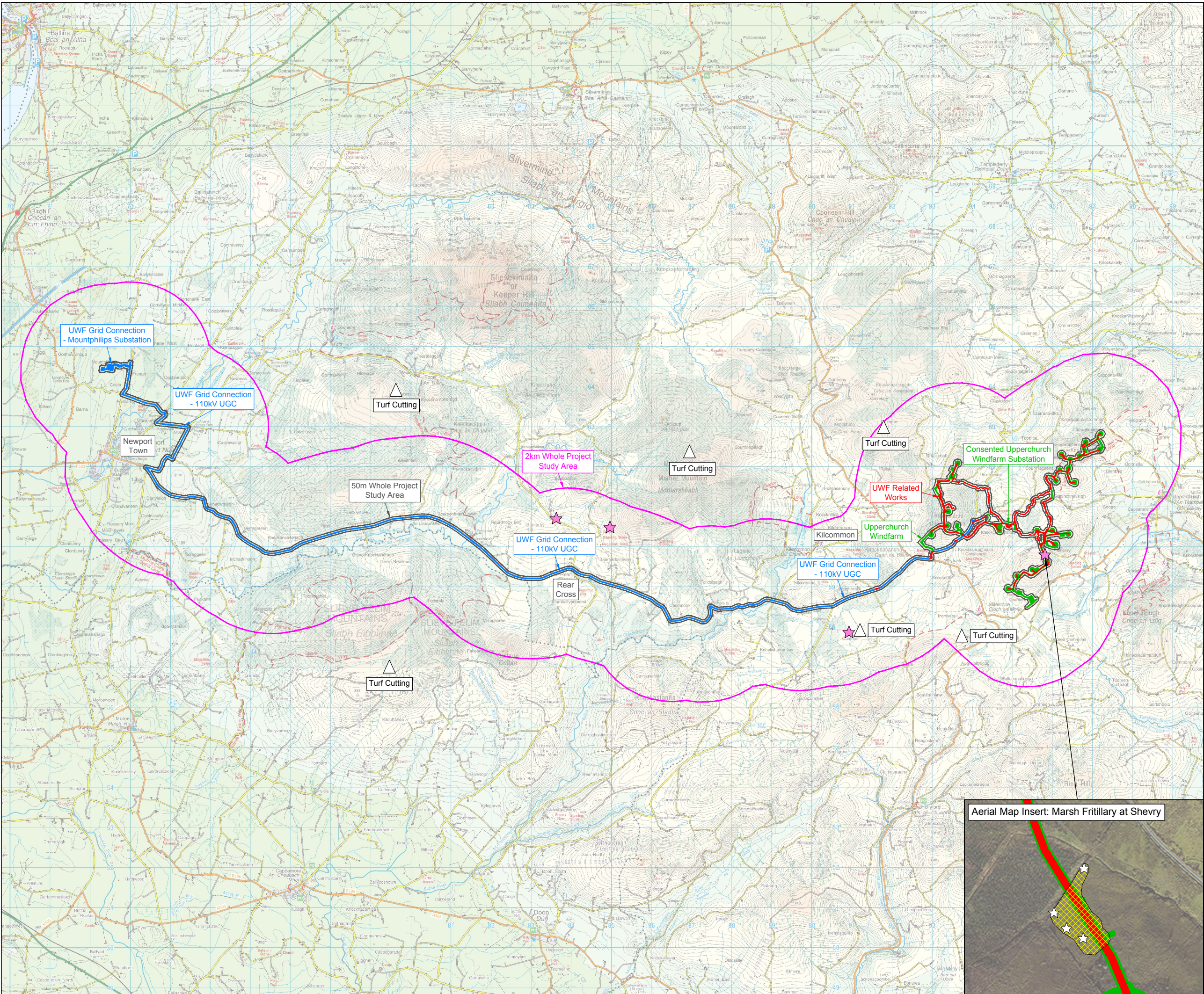
**Project:**  
UWF Grid Connection (2019)

Drawn by:	Checked by:	Date:	Sheet Size:
AB	PK	October 19	A3

Aoife Butler  
Ecopower Developments Ltd  
Zetec House,  
Purcellsinch Business Park, Kilkenny  
TEL: +353 56 7750140  
MOB: +353 83 8805644

**ECOPOWER**





Biodiversity: Marsh Fritillary

**Figure WP 8.11**

Whole Project Study Area for Marsh Fritillary

Map Number:

Map 1 of 1

Legend:

**Elements of the Whole Project:**

- UWF Grid Connection Construction Works Area
- UWF Related Works Construction Works Area
- Upperchurch Windfarm Construction Works Area

**Other Projects/Activities:**

- Turf Cutting

*Forestry: Please see terrestrial habitats, figures 8.5, on aerial photography for reference purposes with respect to the extent of Forestry lands.*

**Study Area Extents:**

- 50m Study Area from all Construction Works Area
- 2km Study Area from all Construction Works Area

**Survey Results:**

- Marsh Fritillary Habitat Location

**Aerial Map Inserts Legend**

- Marsh Fritillary
- Suitable Marsh Fritillary Habitat

Project:

UWF Grid Connection (2019)

Drawn by:	Checked by:	Date:	Sheet Size:
AB	PK	October 19	A3

Aoife Butler  
Ecopower Developments Ltd  
Zetec House,  
Purcellsinch Business Park, Kilkenny  
TEL: +353 56 7750140  
MOB: +353 83 8805644

**ECOPOWER**

Aerial Map Insert: Marsh Fritillary at Shevry